

PRESS RELEASE



Media Enquiry: Kristy Soo

Tel: 3571 8200

Email: kristy@cbal.com.hk

21st September, 2015

Tonight the Light is Almost Sweet Wong Perngfey Solo Exhibition

Opening Reception: 6 – 8 pm, Thur 8th Oct, 2015

Venue: CONTEMPORARY BY ANGELA LI
G/F, 248 Hollywood Road, Sheung Wan, Hong Kong

Exhibition Duration: 8 Oct – 7 Nov 2015

Website: www.cbal.com.hk

Contemporary by Angela Li is proud to present ***Tonight the Light is Almost Sweet***, Beijing-based Malaysian artist Wong Perngfey's first solo exhibition in Hong Kong. Wong Perngfey graduated from the Malaysian Institute of Art, and lived and worked in the artist village in Yogyakarta, Central Java, Indonesia before moving to Beijing, China. The artist's style is experimental and versatile. He holds that he has inseparable relationships with places that he has lived, and that each of his paintings manifests the impact these places have on him.

To Wong Perngfey, to paint is to believe that there is something worth remembering. He projects his history and longings onto spaces he inhabits, and in turn these spaces fill up his memories. His paintings document his stories and roots in places he has lived in, evoke memories as he reminisces, and are clues for people tomorrow to ponder on. Each painting captures one specific moment of the artist's life, and a train of artworks chronicles his ongoing experiences and adventures. Wong believes that his works manifest "the desire to achieve balance between permanence and change".

As memories are subjective and ambiguous, Wong Perngfey is not pinning them down with a representational style. His paintings are vibrant and abstract, full of dynamics and complexities. When Wong first arrived in Beijing in 2010, his artworks still bore the traces he brought with him from the Southeast Asian countries he lived in, such as recognizable settings of Indonesia and Malaysia. Now his palm trees and cottages have given way to abstraction. His works showcase not only his stylistic development as an artist, but also his struggles and evolution as a man in diaspora.

Wong Perngfey was born in Malaysia in 1974. He obtained the Scholarship Award of the Malaysian Institute of Art and graduated in 1998. Wong was awarded Artist Residency in Rimbung Dahan, Malaysia in 2002. From 2008 to 2010, he was based in the artist village of Yogyakarta in Central Java, Indonesia, where he experienced a vibrant creative energy through interacting with local and international artists. In 2010, he moved to Beijing, China and has lived and worked as a full time artist since. His artworks are collected by the National Visual Arts Gallery (Kuala Lumpur), Bank Negara Malaysia Museum Art Gallery (Kuala Lumpur) and Khazanah Nasional Berhad (Kuala Lumpur).

Selected Works in the Exhibition



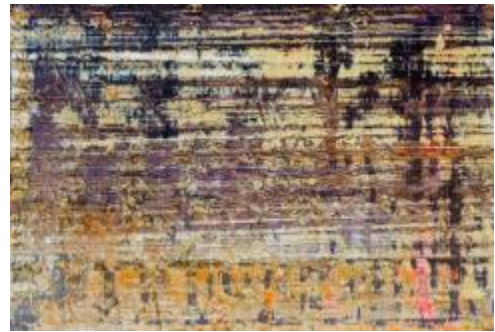
Wong Perngfey, *Hei Qiao Woods*, Oil and Enamel on Linen, 180 x 150 cm, 2015



Wong Perngfey, *Tonight the Light is Almost Sweet*, Oil and Enamel on Linen, 135 x 200 cm, 2015



Wong Perngfey, *Silhouette*, Oil and Enamel on Linen, 135 x 200 cm



Wong Perngfey, *Traces by the Wind*, Oil and Enamel on Linen, 135 x 200 cm, 2015



Wong Perngfey, *Traces of Time*, Oil and Spray Paint on Linen, 155 x 135 cm, 2015



Wong Perngfey, *Traces of Time II*, Oil and Spray Paint on Linen, 155 x 135 cm, 2015

Images: Courtesy of the Artist and *Contemporary by Angela Li*

About *Contemporary by Angela Li* art gallery

Founded in 2008, **Contemporary by Angela Li** has been dedicated to the promotion of contemporary and avant-garde artists from China, Hong Kong and around the world. The gallery has held successful exhibitions for Chen Jiagang, Chen Wenling , Li Hongbo, Mo Yi, Tony Oursler, Georgia Russell, Shi Jindian, Peter Steinhauer, Martin Wehmer, Wong Hau Kwei, Nancy Chu Woo and Ye Funa, to name a few. In January 2013, the gallery moved to a bigger space at the trendiest part of Hollywood Road, with over 2,000 square feet of newly renovated exhibition space. The gallery shall continue to hold quality exhibitions for local and international audiences.



Gallery Exterior, Contemporary by Angela Li
Image: Courtesy of Contemporary by Angela Li

Contemporary by Angela Li

Address	: G/F, 248 Hollywood Road, Sheung Wan, Hong Kong	
Tel	: +852 3571 8200	
Website	: www.cbal.com.hk	
Email	: info@cbal.com.hk	
Opening Hours	: Mon – Sat	10.00 am – 6.30 pm
	Sun & Public Holidays	Closed