

Precised Fictitiousness - Wu Didi Solo Exhibition

Opening Reception: 6 – 8 pm, Wed 2 Nov 2016

Artist Talk (in Mandarin): 1 – 2 pm, Wed 2 Nov 2016

Address: G/F, 248 Hollywood Road, Sheung Wan, Hong Kong

Exhibition Duration: 2 Nov – 3 Dec 2016



Still Life - Bamboo No. 10, Oil on canvas, 120 x 120cm

[Hong Kong, October 2016] Contemporary by Angela Li is proud to present “Precised Fictitiousness”, the first solo exhibition in Hong Kong of Beijing-based artist Wu Didi. The exhibition features 11 *gongbi* oil paintings from her *Still Life – Bamboo* series, *Moss Rock* series and *No Weed* series. With extra fine brushstrokes, Wu delicately describes the spirituality and immortality of nature’s simplest elements. Wu completed her postgraduate degree in oil painting at the Central Academy of Fine Art in 2004 and has been a lecturer at the Central Academy of Dramatic Art ever since.

Wu Didi's works serve as her poetic and pictorial study to examine spirituality in humanity. In her *Still Life – Bamboo* series, the bamboos are “bended” into different geometrical shapes; the unnatural forms are closed with split parts, conveying bamboo's qualities of resilience and toughness. The subjects float in the middle of the canvases with an air of serenity, freezing in time and playing with the figurative within abstraction. By applying layers and layers of paint to the background, the resulting colour reminisces that of celadon glazes, giving it texture and depth. The spaces she creates instantaneously project a spectacular visual appearance, transcendently engaging the viewers and attracting them to explore further outside the visual dimensions.

In China, stone collecting had traditionally been considered a reflection of the owners' tastes and sophistication. It was well documented way back to the Song Dynasty, that famous poet and painter Mi Fu was fanatic in this hobby, studying all aspects of the stones from texture to luster, scents and shapes. In Wu Didi's *Moss Rock* series, the rocks symbolise stability and solidity, while the moss represents energy and vitality of every life form, however small or unnoticeable. Both of them coexist in peace, impacting nature in a humble manner, quietly demonstrating the wisdom of remaining calm and still which is much lacking in our current society.

In the *No Weed Series*, Wu gives back the unique identity to each living being, especially to those being commonly grouped into categories of “the insignificance”. She draws elements from nature in its simplest forms and reminds us of their meaning of existence. Weed is usually referred to as a group of plants, often unwanted and a nuisance; however, the artist considers all things equal and thinks each has its own uniqueness as a participant within the universe. Wu says, “the purpose of art is to question the established systems of judgement and values, even if it means giving our souls a short respite...”

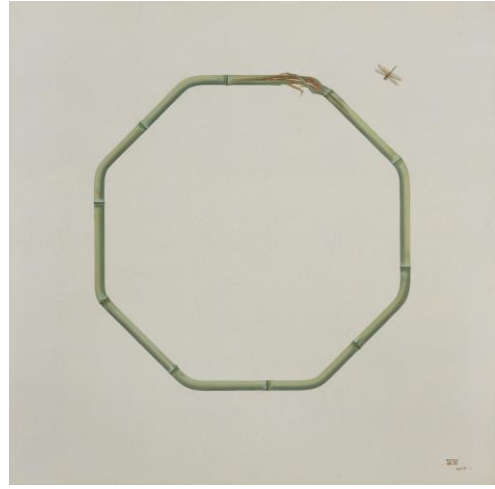
About the artist

Wu Didi (b.1976 in Chongqing, China) completed her postgraduate degree in oil painting at the Central Academy of Fine Art in 2004 and has been a lecturer at the Central Academy of Dramatic Art ever since. Her subject matters evolve from elements of traditional Chinese humanities. The artist had held solo exhibitions in Beijing and New York, and her previous important exhibitions include “CHINA NOW” (London, 2016), “Beyond the Mirror Phase” (Era of Art Museum, Beijing, 2016), “Wu Didi” (New York, 2015) and “Temperature of History” (Shanghai Museum of Art, China, 2015). The artist currently lives and works in Beijing.

Selected works in the exhibition



Still Life - Bamboo No.11, oil on canvas, 120 x 120 cm



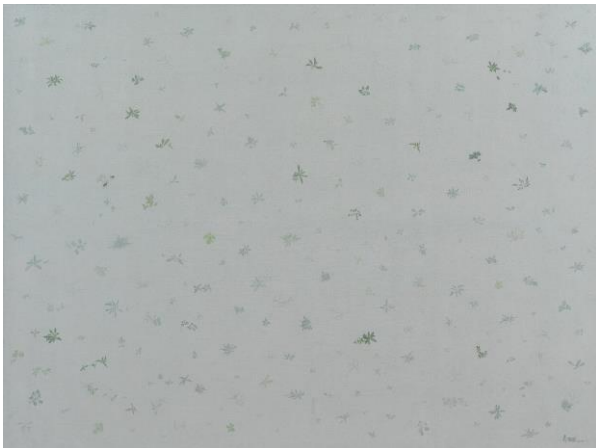
Still Life - Bamboo No.7, oil on canvas, 120 x 120 cm



Not Quite Empty, Oil on canvas, 200 x 140 cm



The Stillness of Nature, Oil on canvas, 150 x 200 cm



No Weed No.2, Oil on canvas, 150 x 200 cm



Time Difference, Oil on canvas, 120 x 240 cm

About Contemporary by Angela Li

Contemporary by Angela Li is dedicated to the promotion of contemporary and avant-garde artists from China, Hong Kong and worldwide. Since its establishment in 2008, the gallery has gained considerable attention and has become one of Hong Kong's top galleries for contemporary art. The gallery has held successful exhibitions for Chen Jiagang, Chen Wenling, Li Hongbo, Mo Yi, Tony Oursler, Georgia Russell, Shi Jindian, Peter Steinhauer, Martin Wehmer, Wong Hau Kwei, Nancy Chu Woo and Ye Funa, to name a few. In January 2013, the gallery moved to a bigger space at the trendiest part of Hollywood Road, with over 2,000 square feet of newly renovated exhibition space. The gallery's carefully curated exhibition programme consistently challenges and brings surprises to the local and international art scene.



Gallery Exterior, Contemporary by Angela Li
Image: Courtesy of Contemporary by Angela Li

Contemporary by Angela Li

Address : G/F, 248 Hollywood Road, Sheung Wan, Hong Kong
Tel : +852 3571 8200
Website : www.cbal.com.hk
Email : info@cbal.com.hk
Opening Hours : Mon – Sat 10.00 am – 6.30 pm
Sun & Public Holidays Closed

