



Peng Di sculptures Curator: Sun Zhenhua

Opening Cocktail : 6 – 8 pm, Fri, 17 Oct 2008
Exhibition Duration : 17 Oct - 13 Nov 2008

*Artist is available for interview during her stay in HK from 16 – 22 Oct.



Peng Di's women, with their hard bronze contorted and languorous bodies are a contradiction - feminine but also masculine in the use of material and also in the choice of media – traditionally, sculpture has been perceived as a male domain. The bodies are desirous, whilst also cold and detached with their mechanical, technological overtones and use of industrial metallic nuts.

Peng Di's sculptures are a contemporary and historic signifier of the way in which women have been sexualised and used as a consumer and entertainment symbol. The artist herself drew on contemporary fashion magazines in creating her exaggerated female forms, thus forcing us to question heretofore engrained social and cultural conceptions we have developed of women's bodies.

Peng Di's cleverly sculpted and stylised works calls into question the very stereotypes we have grown to accept as the norm in society and in art.

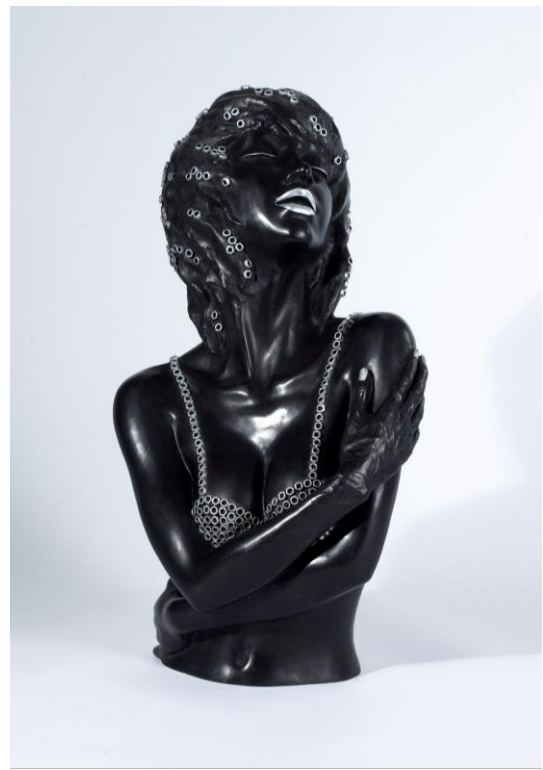
For more information, please contact Diana Arlen or Tanny Chan at info@cbal.com.hk, or call +852 3571 8200.

All images: courtesy of Contemporary by Angela Li and the artist.

Make Up, Peng Di, Bronze, 116 x 60 x 57 cm.



Morning, Peng Di, Bronze, 77 x 76 x 56 cm



Butterfly, Peng Di, Bronze, 55 x 31 x 28 cm



1/100 Second, Peng Di, Bronze, 112 x 70 x 40 cm