



26 August, 2010

Fabrication - Shi Jindian Solo Exhibition

Artist : Shi Jindian
Types of Works : Sculptures, Paintings, Mixed Media Installations
Exhibition Date : 2010.09.10 – 2010.10.31
Opening Date : 2010.09.09
Venue : Contemporary by Angela Li
G/F, 90-92 Hollywood Road, Central, Hong Kong
Website : <http://www.cbal.com.hk>

Contemporary by Angela Li gallery is proud to present "Fabrication – Shi Jindian Solo Exhibition". On show will be more than 10 works of sculptures, paintings and installations.

Shi Jindian's works are based on destruction and reconstruction of real objects. His works, such as "Beijing Jeep BJ-212", are based on industrial products with particular significance in social, political and cultural life, as well as symbols of the times. The transformation of this kind of strong symbolic objects from materiality to unfamiliarity eventually generates an unexpected sense of fascination. This time-consuming and calm, meditation-like creative process and the manpower involved are the artist's total objection to the industrial products destroyed. To him, all the initiatives might merely be ignited by the desire to a change in traditional artistic language of sculptures, but in terms of the cultural aspect, it is an effective means to execute the analysis of cultural symbols.

Shi Jindian was born in 1953 in China's Sichuan Province. He graduated from the Sichuan Fine Arts Institute in 1974, and currently lives and works in Chengdu. Shi Jindian's works can be found in the collections of prominent museums and organisations including The Montpellier Contemporary Chinese Art Biennale, France, Seoul Art Museum, Korea and The White Rabbit Contemporary Chinese Art Collection, Australia.

About Contemporary by Angela Li

Contemporary by Angela Li gallery has become one of Hong Kong's top "go to" places for contemporary art. Its prominent space in the middle of Hollywood Road, coupled with a carefully curated exhibition programme challenges and consistently brings surprises to the local and international art scene. The gallery founder, Angela Li, has been an independent art consultant since 2000. One of her projects, Hong Kong's Langham Place Hotel, has been awarded "Best Art Gallery Masquerading as a Hotel" by Time Magazine in 2006. Angela is also currently the host of "Museum of Art", a weekly art programme on Hong Kong Now TV's News Channel and regularly contributes to local magazines.

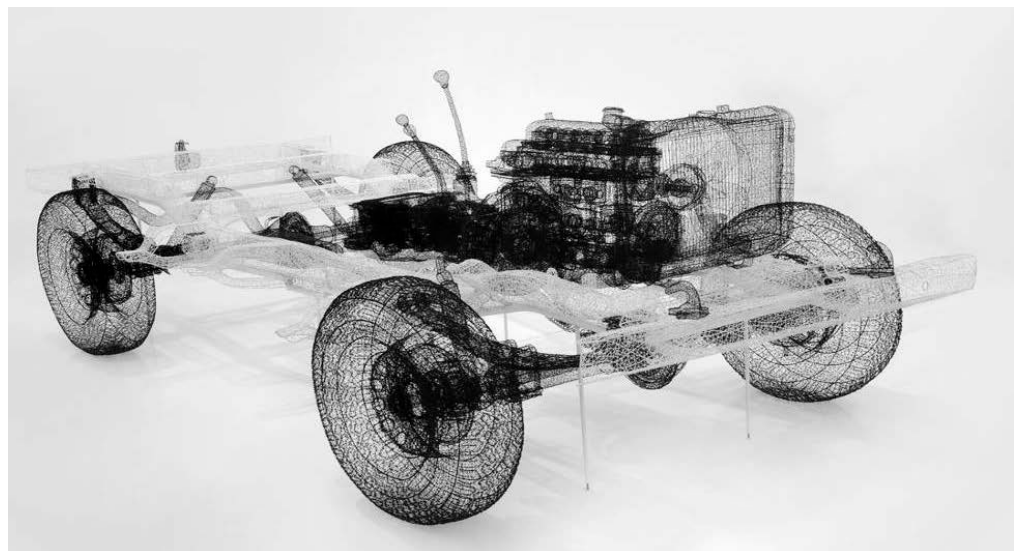
About Beijing Jeep BJ-212



Chairman Mao Zedong in a BJ-212 jeep reviewing Red Guards in Tiananmen Square on 10 November, 1966.

In 1959, experts from the Soviet Union's automobile company GAZ went for tests in China's Hainan Island. When they passed through Beijing, they left the Chinese with a full set of blueprints. The Beijing Automobile Works Company followed these blueprints and reproduced the mid-sized sedan with a four-door hardtop metal structure, named as the "Red East" BJ-760. In 1961, the Chinese government officially commissioned the Beijing Automobile Works Company to develop light off-road vehicles. The first model was the BJ-210 off-road vehicle. The exterior structure of this model was obviously influenced by the legendary WWII jeeps, the Willys MB and Ford GPW: only the grille of the water tank and the shape of the engine hood were changed; the vehicle chassis and bodyworks were similar to the MB's and GPW's, and there was also a gap near the door. Subsequently, the BJ-210 was modified into the newer model BJ-211. The vehicle was changed to a design similar to that of the GAZ-69's four-door structure. Yet without increasing the wheelbase, adding these two back doors made the inside of the car extremely crowded. These two models had never been produced in large quantities. The design of the BJ-212 series of off-road vehicles were finalised in 1965, comprising of the models BJ-212 and BJ-212A. The BJ-212 was a five-seater passenger vehicle and were produced in mass quantities from the beginning of the Cultural Revolution.

After August 1966, Mao Zedong met the Red Guards many times in Beijing. During the 7th time on 10 November and the 8th time on 26 November in 1966, Mao was standing in the BJ-212, driving along Chang'an Road and the runway of the Chinese military's Beijing Xijiao Airport, to review the millions of Red Guards gathering at the roadside.

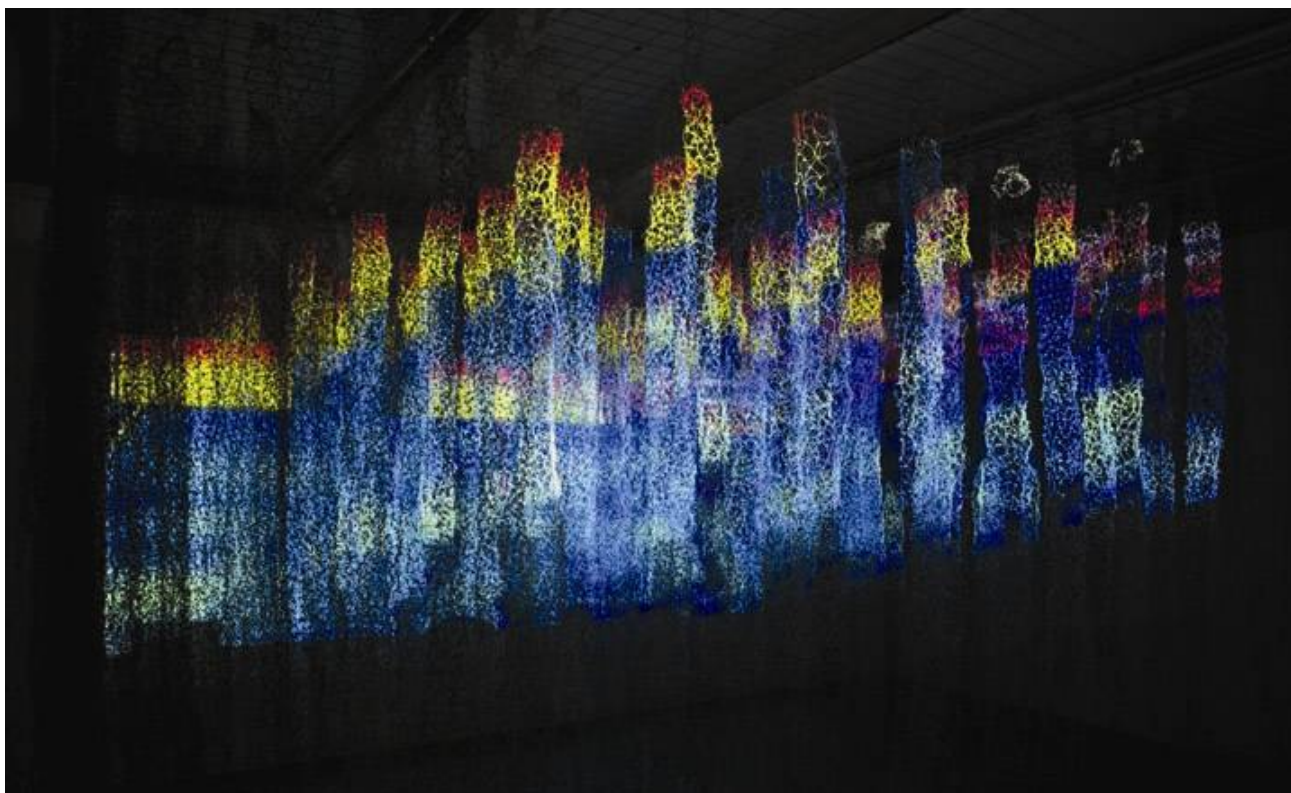


*Beijing Jeep, Coloured
Stainless Steel Wire, 387
x 180 x 125cm, 2007*

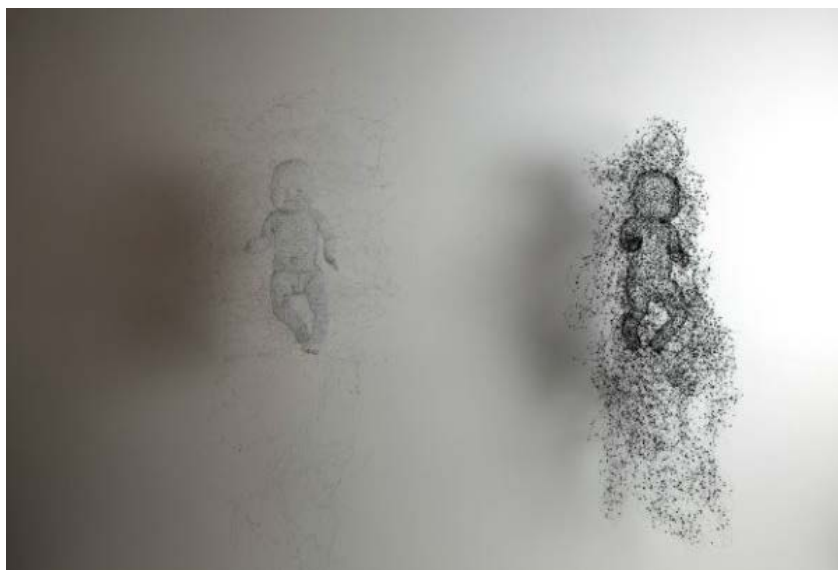
BJ-212 was used extensively in the People's Liberation Army. In addition to transporting commanders, they were also used to deliver weapons and for other uses. Because of the mass production, the BJ-212 was gradually used by heads of provincial government and local enterprises since the 1970s. This realised the change of use of off-road vehicles from military to civilians. According to the regulation at the time, only provincial government levels or above were allowed to have the BJ-212, giving them a distinctive status. As the most common Chinese official's vehicle in the 1970s and 1980s, their owners decorated and upgraded their vehicles to make sure they fitted their identities and status, such as adding sofa covers, blankets, PVC car shed, golden velvet seat covers, pressure water heater and cup holders, embedded plastic car interior, ashtray and lace curtains. These became the city landscape on the streets.

Except for the Beijing Automobile Works Company that produced the BJ-212 series jeeps, thousands of automobile factories within China produced different versions of passenger vehicles according to the BJ-212 up until the beginning of the 1990s. Using the wheelbase of the BJ-212 and adding the handmade car body, various brands were put on these jeeps and could be seen on all motorways. From another point of view, this phenomenon shows the reliability, simplicity of the jeep as well as it being easily produced.

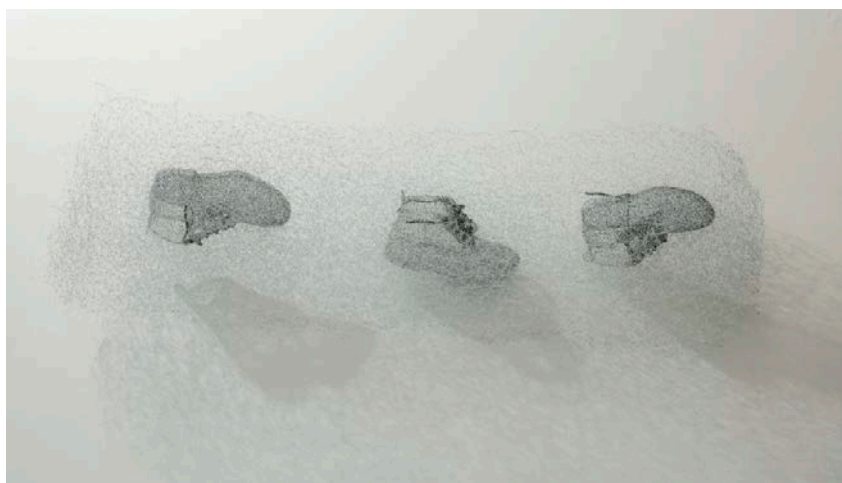
Selected Works of the Exhibition



White Forest, Coloured Stainless Steel Wire Installation with Video Projection



Birth NO.1 & Birth NO.2 › Coloured Stainless Steel Wire



Three Steps No.2, Coloured Stainless Steel Wire



Swan of Saint-Saens › Coloured Stainless Steel Wire, Charcoal & Cotton String